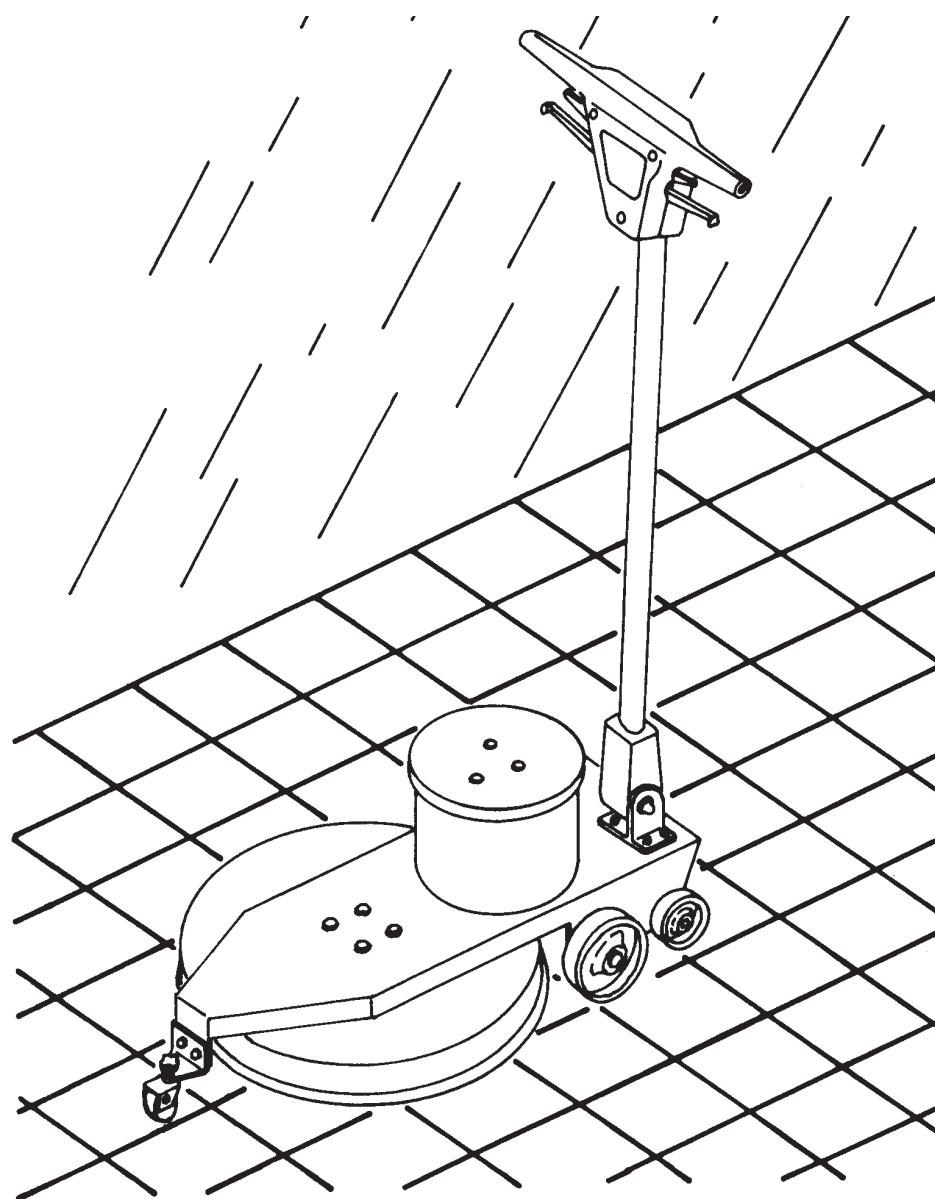


# HS 2000

*Operating instructions and  
maintenance*

*Spare parts*



**ING. O. FIORENTINI s.r.l.**



**THIS MANUAL CONTAINS VITAL INFORMATION FOR THE SAFE USE AND EFFICIENT OPERATION OF THIS MACHINE. CAREFULLY READ THIS OPERATOR'S MANUAL BEFORE STARTING THE MACHINE, AND RETAIN FOR FUTURE REFERENCE. INSTRUCT ALL OPERATORS TO READ THIS MANUAL. FAILURE TO ADHERE TO THE INSTRUCTIONS COULD RESULT IN SERIOUS BODILY ANJURI OR PROPERTY DAMAGE.**

## **PRESCRIBED USAGE**

This machine is designed for the professional cleaning according to these operating instructions. For the safe operation of this machine, and for the safety of the operator observe the following instructions:

- 1) Do not use this machine in an explosive atmosphere such as gas vapor etc. .
- 2) Do not operate this machine unless it is completely assembled.
- 3) Do not leave this machine plugged into the power source while unattended.
- 4) The Floor Maintainer is designed to be used with detergent and water .They should never be used with flammable materials such as : gasoline, kerosene, etc. .
- 5) Do not clean this machine with a high pressure cleaner by water but use only air pressure cleaner.

## **GENERAL SAFETY INSTRUCTION**

This machine is designed and constructed according to the present state of the art and recognised technical safety standards. It is fitted with protective devices, following safety European standard rules. Dangers can occur in spite of this, in particular in the case of maloperation or non-compliance with the specifications and information in the operating instructions. All our equipments are covered by international assurances against risks.

### **1) Sources of danger.**

Electrical voltage / Electric current

Warning: Danger

Contact with voltage or current carrying parts carries the risk of electric shock which can result in serious injury or even death. Never touch damaged cables. Always switch off and disconnect the power supply before carrying out any work on the machine. Replace faulty cables immediately.

### **2) Improper usage.**

Any usage of the machine for a purpose not covered under the "Prescribed usage" or contractually agreed purpose is not permissible. The use of the machine in an unserviceable condition or not in compliance with the following prescription is prohibited:

- Protective devices must not be removed or bypassed.
- Conversions and modification to the machine are not permitted.
- Defective supply cables are only to be replaced by original FIORENTINI cables.
- Coupling elements between mains supply or detachable extension cable must be at least splashproof.
- The machine is to be fitted with a type H circuit breaker for rated current of 15A.

### **3) Organisational points.**

It is the responsibility of the operator to ensure that:

- The machine is used only by personnel who have been instructed in its handling and authorised to use it.
- The recognised occupational safety regulations are observed.
- Any further national or internal company regulations are observed.
- All users are acquainted with the safety regulations and trained in the use of the specific machine.
- All users have read and understood the operating instructions.
- Responsibilities for the operation, maintenance and repair of the machine are clearly assigned and observed.
- Faults and damage are immediately notified to the Service Agent of FIORENTINI.

### **4) Emergencies.**

In the case of an emergency:

- Pull out the mains connector plug.
- Immediately apply recognised first-aid measures.

After incidents, do not resume operation with the machine until it has been inspected by FIORENTINI authorized technical.

### **5) Operating for the first time.**

Delivery, instruction on safety rules, handling and maintenance as well as operation for the first time must be carried following the specification of this instruction book. The operator is responsible for instructing the users.

**FURTHER SAFETY INSTRUCTIONS CONCERNING OPERATING AND MAINTENANCE ARE DETAILED IN THE RELEVANT SECTIONS AND MUST BE COMPLIED WITH!**

### IMPORTANT NOTES

Before starting to use the machine please observe the following points:

- If you should discover any damage when unpacking the machine please inform your sale agency.
- The supply voltage must be the same as that shown on the nameplate.

### FOR ALL GROUNDED APPLIANCES

This appliance should be grounded while in use to protect the operator from electric shock. The appliance is equipped with an approval three-conductor european cord and three-prong grounding type plug to fit the proper grounding type receptacle. The green (or green and yellow ) conductor in the cord is the grounding wire. Never connect the green (or green and yellow) wire to a live terminal.

### OPERATION OF HIGH SPEED FLOOR MACHINES

Fiorentini high speed floor machines are designed to be used with a forward and backward movement. It will not swing side to side as with standard, low speed machines. The front of the machine should be lifted for turning, transporting and storage of the machine. Damage to the pad and pad driver can result if pushed, pulled or stored with the weight of machine on the pad while it is not in operation. Do not apply pressure or weight to the front of the machine while in operation. This causes an excessive load on the motor and will shorten the life of the motor. Model 1100 and 1500 are balanced to provide superior performance when used with the proper pad and high quality floor finishes. The Model 2000 comes equipped with a front caster to stabilize the machine at its 2000 rpm operating speed. This caster is adjustable to achieve proper pad pressure. Please refer to the pad installation procedures regarding adjustment of this caster. The machine was pre-adjusted at the factory using a 25mm thick pad. **Fiorentini high speed floor machines** come equipped with a 15m heavy gauge power cord. We do not recommend the use of extension cords with these floor machines. Damage to the motor can result due to a voltage drop when inadequate extension cords are used.

***WARNING: NEVER TURN ON MACHINE WHEN HANDLE IS IN UPRIGHT VERTICAL POSITION BECAUSE THE MACHINE IS SUPPLIED OF SAFETY MICRO-SWITCH. THE "ON" AND "OFF" MASTER SWITCH IS OPERATED BY MEANS OF LEVERS IMMEDIATELY UNDER HANDLE GRIPS. WHEN TRANSPORTING OR STORING MACHINE, RAISE HANDLE TO VERTICAL POSITION.***

### PRESTART-UP CHECKS

- 1) Check pad and pad driver; both must be secure and properly aligned.
- 2) Check handle assembly and camlock lever. Loose bolts should be tightened to avoid damage to attachment points.
- 3) Check power cable, strain relief and cord plugs for frayed or damaged insulation.
- 4) Plug power cord into outlet.
- 5) Adjust handle height to desired level and with the
- 6) The machine can be operated with either the right or left levers located below the handle bars. Squeeze the lever toward the handle bar to start the machine.

### USE CAUTION

**DO NOT** hold the machine in one spot for more than one or two second. This is a high speed machine and can damage a hard surface floor very quickly leaving a permanent burn mark. If you must stop, release the trigger lever to stop the machine.

**AVOID** any protruding objects such as bolts, mouldings, conduit pipes, etc. Even the slightest contact can damage the pad and pad driver.

### PAD DRIVER AND PAD SELECTION

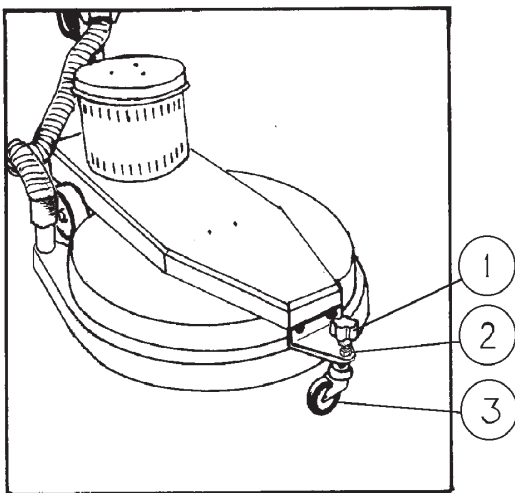
These HIGH SPEED MACHINES come equipped with a balanced high speed pad driver with a locking pad holder. This style pad driver and the locking pad holder must always be used. An unbalanced pad driver will create vibration.

Vibrations can damage the machine and is unsafe to operate. If the locking pad holder is not used, the pad will be thrown out from under the pad driver. Proper pad selection is important to achieve the desired performance of the machine and desired floor finish. We recommended a 25 mm. thick pad. There are many types and grades of pads available. Poor quality pads are often uneven in density causing thick and thin spots which cause vibrations and poor finish. Avoid using seconds or rejected pads. Pad installation is a simple procedure.

Lock the handle in the full upright position. Disconnect the power at the outlet (unplug cord). Tilt the machine back fully, allowing it to rest on the handle block and wheels. The pad locking mechanism is a yellow plastic piece found at the center of the driver. The center section and lock plate are removed by turning counter-clockwise as indicated by the arrows on the lock ring. Fully remove the lock nut from the hub. Lift the old pad off and turn over or discard as needed. Place new pad into pad driver making certain it is centered to avoid erratic operation. Re-install the center lock plate and ring and hand tighten. The pad driver and center ring will hold the pad securely while in operation.

### FRONT CASTER (Model HS 2000)

Adjusting the front caster is a simple, minor adjustment. Loosen the lock nut located under the black adjustment knob. Turn the knob clockwise to raise the pad and reduce pad pressure. Turn the knob counter clockwise to lower the pad and increase pad pressure. Adjust the pad height up or down to achieve a slight drag on the motor when in operation. **DO NOT OVERLOAD THE MOTOR BY SETTING THE PAD TOO LOW.** Make only minor adjustments and make a test pass with the machine. Compare the sheen after each pass. When the adjustment is completed, retighten the lock nut against the bracket to hold the pad height at the selected level.



- 1) Adjustment knob
- 2) Tightening nut
- 3) Wheel

### MAINTENANCE OF MACHINE

**WARNING: MAINTENANCE SHOULD BE PERFORMED BY QUALIFIED PERSONNEL ONLY.** Your **Fiorentini** standard speed floor machine is a very rugged, durable machine which requires very little maintenance or upkeep. The previously described **PRESTART-UP CHECKS**, if performed, should reveal any potential operational problems or hazards which may be present.

**Lubrication:** your machine has been completely lubricated at the factory before shipment to you. The gear unit is lubricated for 2 or 3 years (for normal work).

Reasonable care and skills should be used when servicing or making repairs to your machine. **DO NOT ALLOW UNSKILLED PERSONNEL TO OPERATE OR PERFORM REPAIRS TO YOUR MACHINE.**

If necessary, contact your local **Fiorentini** Distributor for assistance. Each and every component of this machine is available as a service part through your Distributor. An exploded view of the handle assembly and the machine base are provided with descriptions and part numbers to assist in proper identification of parts and ordering. The following outlines provide step-by-step procedures for performing routine repairs to your machine.

### DRIVE BELT ADJUSTMENT PROCEDURES

Periodic adjustment of the **DRIVE BELT** will prolong the service life of the belt and maintain the level of performance expected of the machine. A squeal will come from the machine on startup when the belt needs tightening. When this happens, do not continue to operate the machine until the belt has been properly adjusted.

- 1) Disconnect power cable from outlet (unplug machine).
- 2) Lock handle in full upright position.
- 3) Tilt machine back and allow it to rest on the handle block and wheels.
- 4) Remove the protection carter. Loosen four bolts attaching the motor to the base (do not remove bolts).
- 5) An "L" bracket is located at the rear of the machine with a bolt which extends out through the rear portion of the base. Turn the nut on the out side of the base clockwise to tighten the belt. Turn the nut on the outside of the base clockwise to tighten the belt. Tighten until there is no play or deflection of the belt. **DO NOT OVERTIGHTEN THE BELT AS THIS CAN DAMAGE THE MOTOR AND PAD DRIVER HUB BEARING.**
- 6) Tighten four bolts which hold the motor in place and return machine to upright position.

### DRIVE BELT REPLACEMENT

If replacement of the drive belt is necessary, use the following procedures:

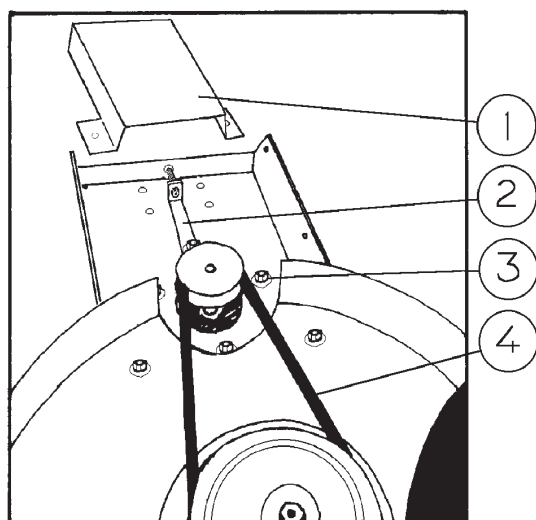
- 1) Disconnect power cable from outlet (unplug machine).
- 2) Lock handle in the full upright position.
- 3) Tilt machine back and allow it to rest on the handle block and wheels.
- 4) Remove the protection carter. Loosen four bolts attaching the motor to the base. (do not remove bolts).
- 5) Turn nut on the bolt in the "L" bracket counter-clockwise to loosen the drive belt.
- 6) Remove pad lock ring and plate.
- 7) Lift off pad and remove three (3) phillips scrws holding the lock plate hub and lift off.
- 8) Remove three (3) screws holding the pad driver in place and lift off.
- 9) Remove drive belt and inspect pulleys for damage. Remplace if necessary.
- 10) Install new belt into grooves on pulleys.
- 11) Turn bolt in "L" bracket cloclwise to tighten the new belt. Tighten until there is no play in the belt and stop. **DO NOT OVERTIGHTEN THE BELT.**
- 12) Tighten the bolts holding the motor in place. Replace the protection carter.
- 13) Reinstall pad driver with three (3) retaining screws.
- 14) Reinstall lock plate hub with three (3) phillips head screws.
- 15) Install pad, lock ring and plate.
- 16) Return machine to upright position.

Routine lubrication of wheels with a light spry lubricant and general good cleaning will also help keep your high quality **Fiorentini floor machine** operating at peak performance.

Your local **Fiorentini floor machine** Distributor can provide any parts or accessory items needed for your machine.

An exploded view of the handle assembly and base units are provided for your information along with a parts listing with descriptions to identify any part needed to keep your machine in operation for years to come.

If you need assistance with service or maintenance of your machine, contact your local Distributor or our Technical Service Departement.



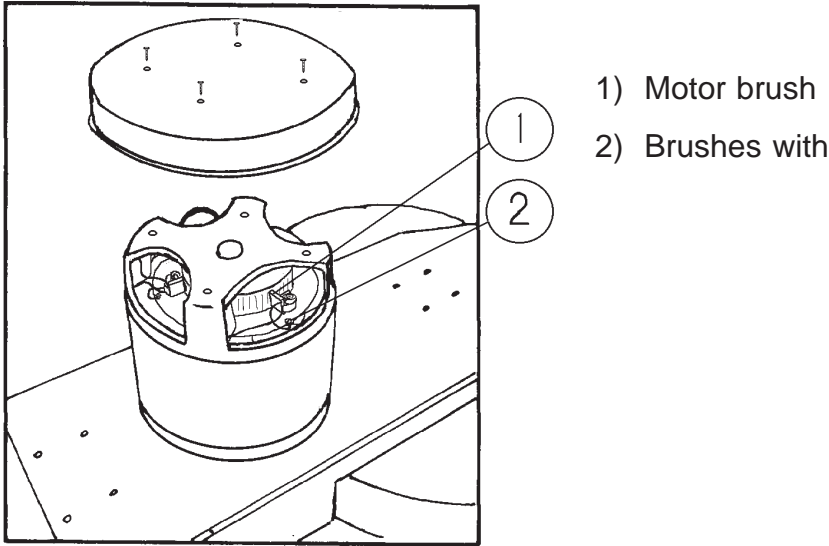
- 1) Protection carter
- 2) "L" bracket
- 3) Bolts attaching the motor
- 4) Belt

### MOTOR BRUSH REPLACEMENT

- 1) Disconnect power cable from outlet (unplug machine).
- 2) Release camlock lever and lay handle flat or tilt back to allow access to motor.
- 3) Unplug motor powered lead from lead at base of handle fork.



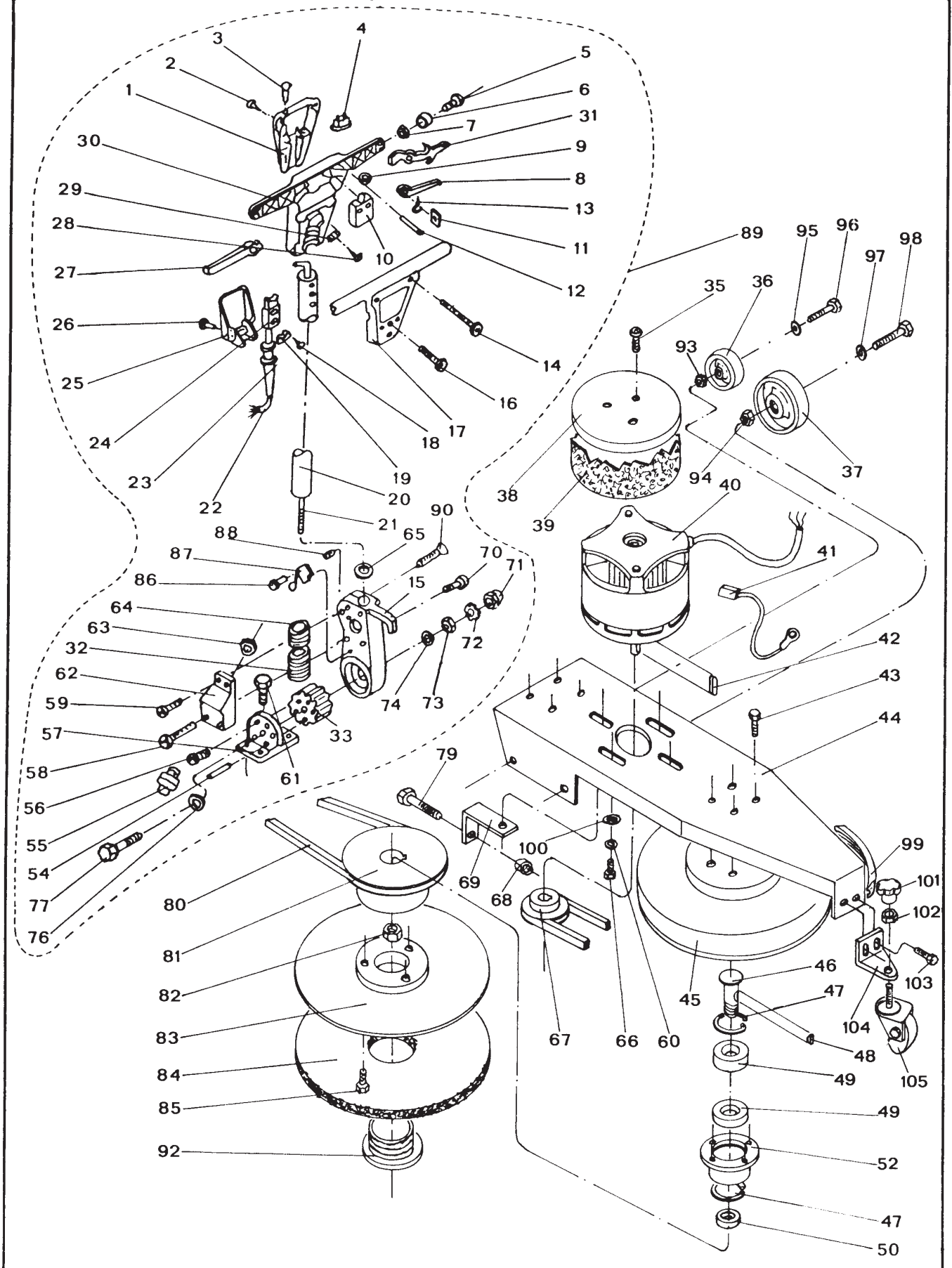
- 4) Remove four (4) Truss Head Phillips screws from drip cover and lift off.
- 5) The 1.5 HP Motor on your machine has four (4) brushes with leads connected to the brush plate. The leads are fastened to the plate with a brass screw located to the left of the brush holder. Loosen but do not remove these screws.
- 6) Remove brushes from brush holders and replace with new brushes.
- 7) Reconnect brush leads and tighten brass retaining screws.
- 8) Reinstall drip cover and connect power lead.
- 9) Return handle to full upright position and lock.
- 10) Reconnect power cable to outlet (plug in machine) and test the machine.



<b>TECNICAL CHARACTERISTICS</b>	
POWER	1100 W
PROTECTION CLASS	1
LENGTH OF CORDS	15 m
BRUSH SIZE	480 mm
BRUSH REVS.	2000 rpm
ENERGY SOURCE	direct current
VOLT	220 v
WEIGHT	35 Kg
DECIBEL	70 dB
<b>OPTIONAL (VACUUM ATTACHMENT)</b>	
POWER	800 W
AIR FLOW	51 L/s
DEPRESSION	195 mbar
WEIGHT	10 Kg
DECIBEL	77 dB

# HS 2000

# FIG. 1

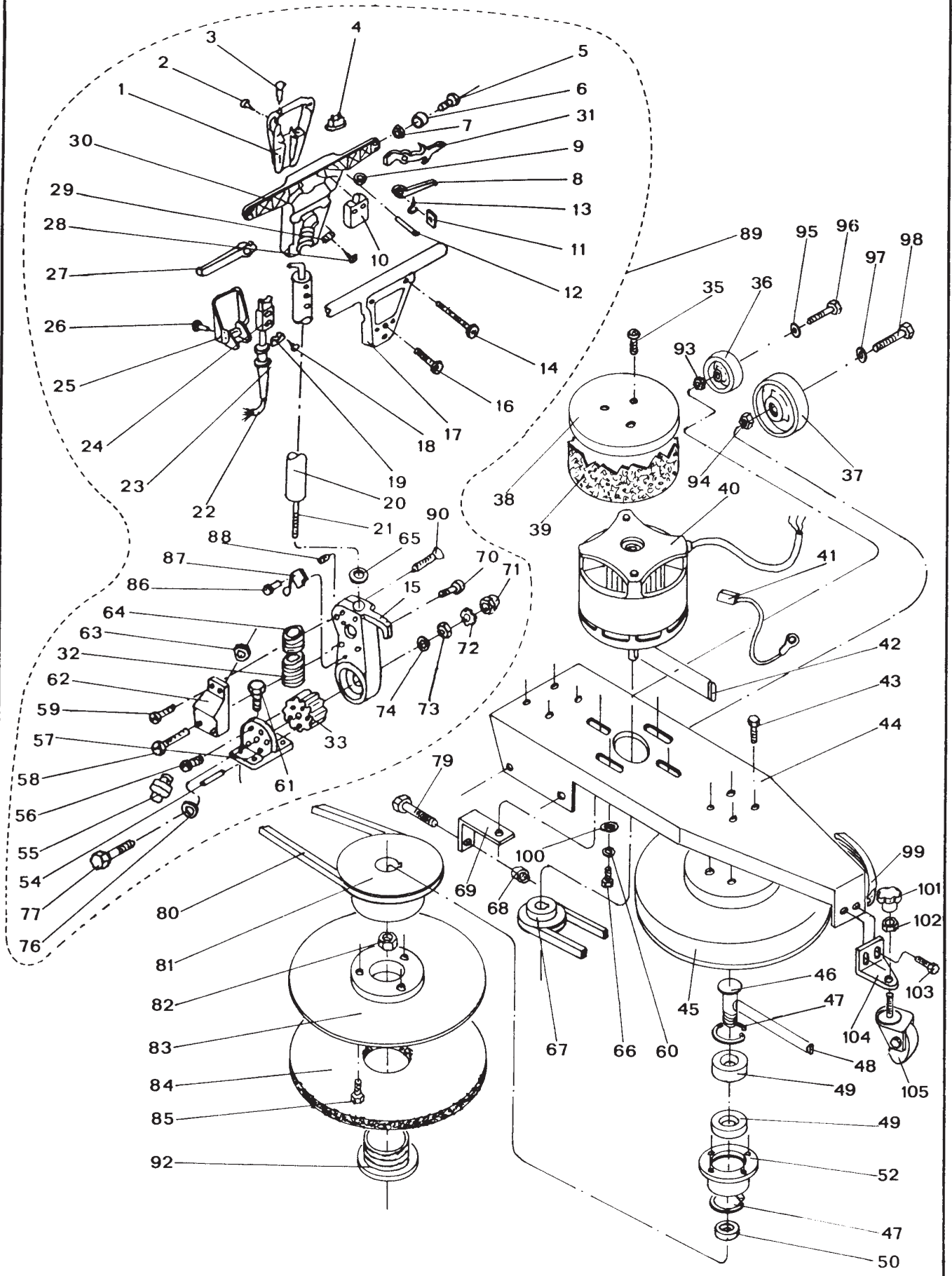




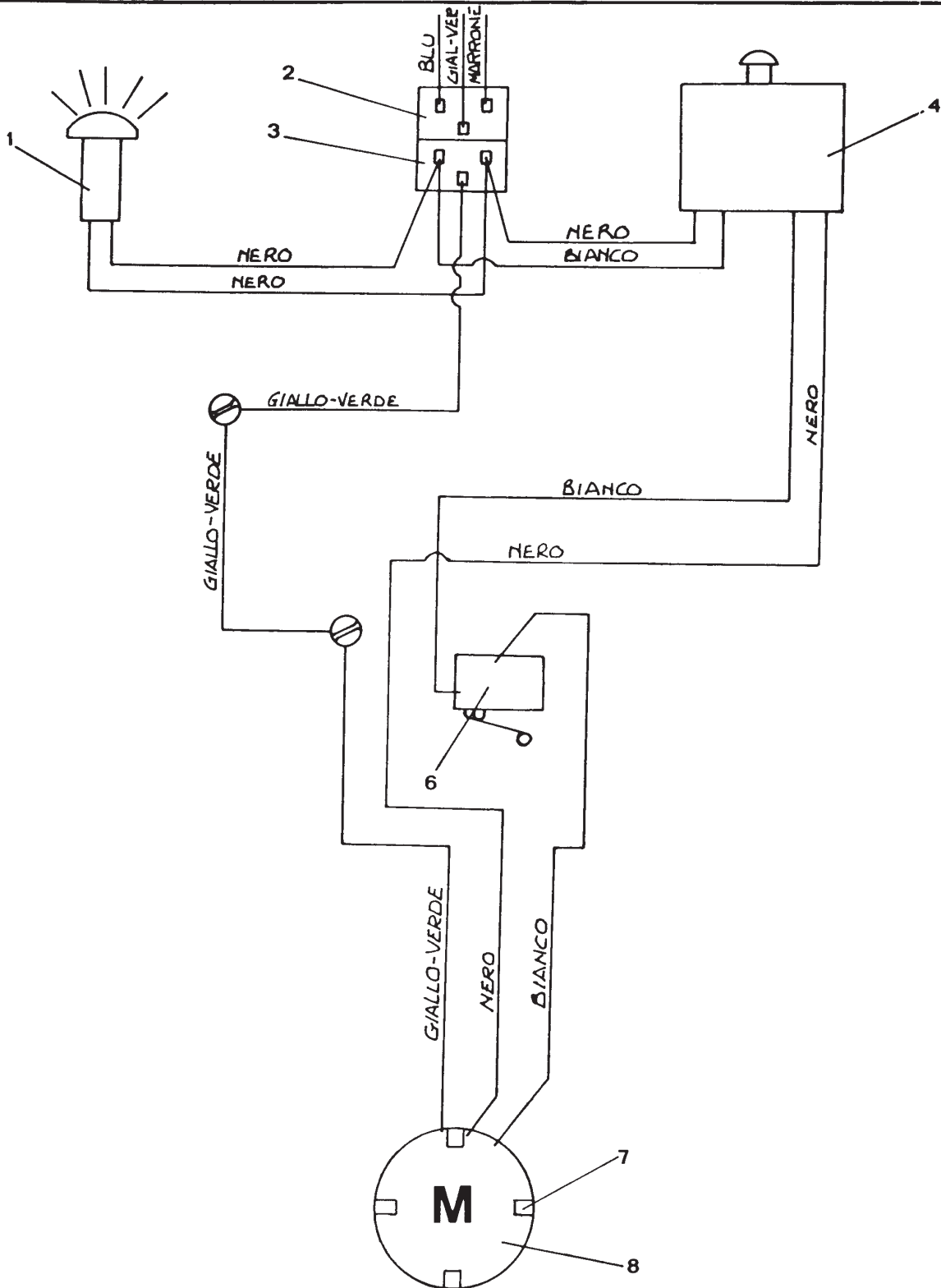
N.Position	Code Num Qta	Descrizione	Description	Description	Bezeichnung
200.01.001	C0069	1 COPERCHIO SPINA CAVO ELETTRICO	- PLUG COVER	COUVERCLE	DECKEL
200.01.002	VA224	4 VITE AUTOFIETT.4,8x19 UNI 6954/71	- SCREW	VIS	SCHRAUBE
200.01.003	LP010	1 LAMPADA SPIA ROSSA 220V	- RED PILOT LIGHT 220V	LAMPE VOYANT ROUGE	KONTROLLAMPE, ROT
200.01.004	PY307	1 SPINETTA MASCHIO 250V 10A	- PLUG	CONNECTEUR	STECKER
200.01.005	VC223	2 VITE CILIN.CROCE M6x20 UNI 7687	- SCREW	VIS	SCHRAUBE
200.01.006	TA011	2 TAPPO MANICO	- PLUG	BOUCHON	STOPFFEN
200.01.007	DD204	2 DADO M6 UNI 5588/65	- NUT	ECROU	MUTTER
200.01.008	LV148	1 LEVA SERBATOIO	- TANK LEVER	LEVIER	BEHALTERHEBEL
200.01.009	CF006	1 RONDELLA ELASTICA CAPPED D.5,5	- EL.WASHER CAPPED D.5,	RONDELLE	FEDERSCHEIBE
200.01.010	IN024	1 MICRO COMANDO ROTAZIONE SPAZZOLA	- BRUSH ROT.MICRO CONTR	MICRO INTERRUPTEUR	MIKROSCHALTER
200.01.011	C0073	2 COPERCHIETTO LEVA	- LEVER COVER	COUVERCLE	HEBELDECKEL
200.01.012	SS004	3 SPINA CILINDRICA 6X50	- PIN	CONNECTEUR	ZYLINDERSTIFT
200.01.013	MI056	1 OCCHIELLO FILETTATO D1=5 2,3X4,5X12	- THREADED EYELET	OEILLET	OESE
200.01.014	VA229	4 VITE AUTOFIETT. 4,8x38 UNI 6954/71	- SCREW	VIS	SCHRAUBE
200.01.015	SU169	1 SUPPORTO MANICO MONOSPAZZOLA	- SUPPORT	SUPPORT	HALTER
200.01.016	VC223	4 VITE CILIN.CROCE M6x20 UNI 7687	- SCREW	VIS	SCHRAUBE
200.01.017	MN025	1 MANICO SUPER IN PLASTICA NERO FORATO	- BLACK PLASTIC HANDLE	POIGNEE NOIR	GRIFF
200.01.018	VA250	2 VITE AUTOF TC CROCE 3,9X16 UNI 6954/71	- SCREW	VIS	SCHRAUBE
200.01.019	PY308	1 FERMACAVO IN PLASTICA	- PLASTIC FAIRLEAD	ARRETE-CABLE	KABELSPERRE
200.01.020	MN024	1 MANICO MONOSPAZZOLA	- HANDLE	POIGNEE	GRIFF
200.01.021	TI099	1 TIRANTE REGOLAZIONE MANICO	- TIE ROD	TIRANT	SPANNSTANGE
200.01.022	PY312	1 CAVO H07RN-F 3G 1,5NERO L=15mt MATAS.	- CABLE	CABLE	KABEL
200.01.023	PY309	1 PASSACAVO IN GOMMA NERA	- BLACK RUBBER FAIRLEAD	PASSE-CABLE	KABELDURCHGANG
200.01.024	PY280	1 PRESA 42R04.2311 10A	- SOCKET	PRISE	DOSE
200.01.025	C0070	1 COPERCHIO PRESA CAVO ELETTRICO	- SOCKET COVER	COUVERCLE	DECKEL
200.01.026	VC202	2 VITE CILIN.CROCE M4x10 UNI 7687	- SCREW	VIS	SCHRAUBE
200.01.027	LV150	1 LEVA SBLOCCAGGIO ROTAZIONE MANICO	- RELEASE LEVER	LEVIER	HEBEL
200.01.028	VA250	2 VITE AUTOF TC CROCE 3,9X16 UNI 6954/71	- SCREW	VIS	SCHRAUBE
200.01.029	PY308	1 FERMACAVO IN PLASTICA	- PLASTIC FAIRLEAD	ARRETE-CABLE	KABELSPERRE
200.01.030	MN026	1 MANICO INFER IN PLASTICA NERO	- BLACK PLASTIC HANDLE	POIGNEE NOIR	GRIFF
200.01.031	LV149	2 LEVA COMANDO ROTAZIONE SPAZZOLA	- CONTROL LEVER	LEVIER	HEBEL
200.01.032	XD017	1 PERNO DENTATO ROTAZIONE MANICO	- PIN	PIVOT	BOLZEN
200.01.033	XD016	1 PIGNONE ROTAZIONE MANICO	- PINION	PIGNON	RITZEL
200.01.035	VC211	3 VITE CILIN.CROCE M5x10 UNI 7687	- SCREW	VIS	SCHRAUBE
200.01.036	RT063	2 RUOTA D.80x25 TIPO A01080	- WHEEL	ROUE	RAD
200.01.037	RT055	2 RUOTA MONOSPAZZOLA 125x12x32 SERIE 901	- WHEEL	ROUE	RAD
200.01.038	CA055	1 CARTER PROT. MOTORE	- COVER	COUVERCLE	DECKEL
200.01.039	FT013	1 FILTRO PROTEZIONE MOTORE	- MOTOR FILTER	FILTRE MOTEUR	FILTER
200.01.040	MO130	1 MOTORE MONOSP.HS 1.5 HP 3200 RPM	- MOTOR 1.5 HP	MOTEUR 1.5 HP	MOTOR
200.01.041	MP138	4 CARBONCINO MOTORE MONOSP. HS	- BRUSH MOTOR	CHARBONS MOTEUR	MOTORBURSTE
200.01.042	CH004	1 LINGUETTA 4,8x38	- TONGUE 4,8x38	CLAVETTE	PASSFEDER
200.01.043	VE244	4 VITE ESAGONALE M6x20 UNI 5737/77	- SCREW	VIS	SCHRAUBE
200.01.044	TP072	1 TELAIO BASE MONOSPAZZOLA HS 2000	- FRAME	CHASSIS	MASCHINELLE
200.01.045	CA054	1 CARTER PROTEZIONE DISCO SPAZZOLA	- COVER	COUVERCLE	DECKEL
200.01.046	AL037	1 ALBERO ROTAZIONE DISCO SPAZZOLA	- SHAFT	ARBRE	WELLE
200.01.047	SG060	2 ANELLO SEEGER PER INT.DIAM.35 UNI 7437	- SEEGER	SEEGER	SEEGERRING
200.01.048	CH015	1 LINGUETTA A DISCO 5x6.5x15.72	- KEY	CLAVETTE	PASSFEDER
200.01.049	CS025	2 CUSCINETTO A SFERE 6003 2RS	- BALL BEARING	ROULEMENT A BILLE	KUGELLAGER
200.01.050	DT082	1 DISTANZIALE CUSCINTO MONOSP.	- SPACER	ENTRETOISE	BUCHSE
200.01.052	SU221	1 SUPPORTO CUSCINETTO MONOSPAZZOLA HS	- SUPPORT	SUPPORT	HALTER
200.01.054	SP022	3 SPINA ELASTICA 6X36 UNI 6874/71	- TENSION PIN	CONNECTEUR	SPANNSTIFT
200.01.055	PY159	2 PASSACAVO CON FERMA CAVO PG11	- FAIRLEAD	PASSE-CABLE	KABELDURCHGANG
200.01.056	VB231	3 VITE CIL. BRUGOLA M8x20 UNI 5931	- SCREW	VIS	SCHRAUBE
200.01.057	SU161	1 SUPPORTO RUOTA DENTATA	- SUPPORT	SUPPORT	HALTER
200.01.058	VC209	2 VITE CILIN. CROCE M4x50 UNI 7687	- SCREW	VIS	SCHRAUBE
200.01.059	VC204	2 VITE CILIN. CROCE M4x16 UNI 7687	- SCREW	VIS	SCHRAUBE
200.01.060	RO256	4 RONDELLA SPACCATA DIAM. 10 UNI 1751	- WASHER	RONDELLE	SCHIEBE
200.01.061	VE464	4 VITE ESAGONALE M8x35 UNI 5737/77 INOX	- SCREW	VIS	SCHRAUBE
200.01.062	CA039	1 CARTER PROTEZIONE MICRO	- MICRO PROTECTION CASE	COUVERCLE	GEHAUSE F. MIKRO.
200.01.063	GH011	1 GHIERA PASSACAVO PG11	- FAIRLEAD RING NUT	EMBOUT	GITTER
200.01.064	ML059	1 MOLLA RITORNO BLOCCO MANICO	- SPRING	RESSORT	FEDER
200.01.065	RO208	1 RONDELLA NORMALE DIAM. 17 UNI 6592/69	- WASHER	RONDELLE	SCHIEBE
200.01.066	WE260	4 VITE A TESTA ESAGONALE 3/8"x3/4"	- SCREW	VIS	SCHRAUBE
200.01.067	PP042	1 PULEGGIA Z60 HS1100/2000	- PULLEY	POULIE	SCHIEBE
200.01.068	DD254	1 DADO AUTOBLOCCANTE M8	- SELF-LOCKING NUT	ECROU DE SURETE	MUTTER
200.01.069	LV175	1 LEVA TENDICINGHIA	- LEVER	LEVIER	HEBEL
200.01.070	VC202	1 VITE CILIN.CROCE M4x10 UNI 7687	- SCREW	VIS	SCHRAUBE
200.01.071	DD266	1 DADO CIECO M12 UNI 5721/69	- CAP NUT	ECROU BORGNE	HUTMUTTER
200.01.072	RO910	1 RONDELLA DENTATA DIAM.12 UNI 3706	- WASHER	RONDELLE	SCHIEBE
200.01.073	DD212	1 DADO M12 SPESS.mm.8 UNI 5589/65	- NUT	ECROU	MUTTER
200.01.074	RO206	1 RONDELLA NORMALE DIAM. 12 UNI 6592/69	- WASHER	RONDELLE	SCHIEBE
200.01.076	RO206	1 RONDELLA NORMALE DIAM. 12 UNI 6592/69	- WASHER	RONDELLE	SCHIEBE
200.01.077	VE308	1 VITE ESAGONALE M12x75 UNI 5737/77 ZINC	- SCREW	VIS	SCHRAUBE
200.01.079	VE259	1 VITE ESAGONALE M8x90 UNI 5737/77	- SCREW	VIS	SCHRAUBE
200.01.080	CI019	1 CINGHIA 3V 375	- BERT	COURROIE	ZAHNREMEN
200.01.081	PP041	1 CORPO PULEGGIA MONOSPAZZOLA HS 2000	- PULLEY	POULLIE	ROLLE
200.01.082	DD257	1 DADO AUTOBLOCCANTE M16x1,5	- SELF-LOCKING NUT	ECROU DE SURETE	MUTTER
200.01.083	TS017	1 DISCO TRASCINATORE 19"	- PAD HOLDER	PLATEAU ENTR.	MITNEHMER
200.01.084	DP061	1 DISCO SPESSORATO BIANCO 19"	- WHITE SHIMMED DISC	DISQUE BLANC	PASSSCHEIBE, WEISS
200.01.084	DP062	1 DISCO SPESSORATO GIALLO 19"	- YELLOW SHIMMED DISC	DISQUE JAUNE	PASSSCHEIBE, GELB
200.01.084	DP063	1 DISCO SPESSORATO ROSSO 19"	- RED SHIMMED DISC	DISQUE ROUGE	PASSSCHEIBE, ROT
200.01.084	DP064	1 DISCO SPESSORATO BLEU 19"	- BLUE SHIMMED DISC	DISQUE BLEU	PASSSCHEIBE, BLAU
200.01.084	DP065	1 DISCO SPESSORATO VERDE 19"	- GREEN SHIMMED DISC	DISQUE VERT	PASSSCHEIBE, GRUEN

HS 2000

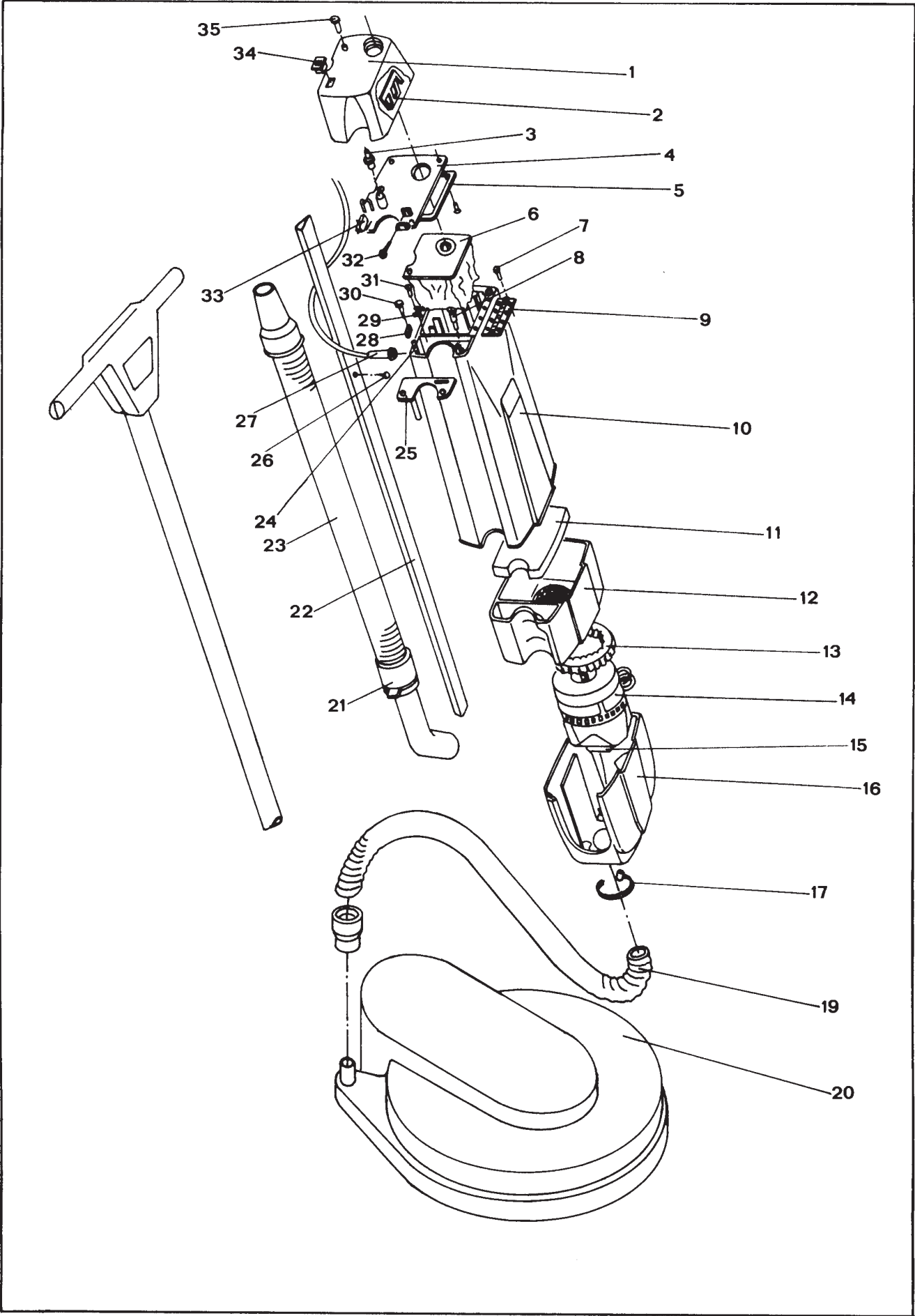
FIG. 1



N.Position	Code	Num	Qta	Descrizione	Description	Description	Bezeichnung
200.01.084	DP066	1		DISCO SPESSORATO MARRONE 19"	BROWN SHIMMED DISC	DISQUE MARRON	PASSSCHEIBE, BRAUN
200.01.084	DP067	1		DISCO SPESSORATO NERO 19"	BLACK SHIMMED DISC	DISQUE NOIR	PASSSCHEIBE, SCHWARZ
200.01.085	VC213	3		VITE CILIN.CROCE M5x16 UNI 7687	- SCREW	VIS	SCHRAUBE
200.01.086	VC301	2		VITE TESTA CILIND.TAGLIO M3x16 UNI 7689	- SCREW	VIS	SCHRAUBE
200.01.087	IN025	1		MICRO SICUREZZA AH71865	- MICRO SAFETY	MICRO SURETE	MIKROSCHALTER
200.01.088	VG032	2		GRANO M8x12 UNI 5927/67	- DOWEL	GRAIN	DUEBEL
200.01.089	KIT255	1		ASSEMBLAGGIO MANICO MONOSPAZZOLA C/CAVO	- HANDLE ASSY	ASS.POIGNEE	GRIFFZUSAMMENBAU
200.01.090	VV244	1		VITE SVASATA BRUGOLA M8x35 UNI 5933/77	- SCREW	VIS	SCHRAUBE
200.01.092	FL038	1		FLANGIA FISSAGGIO SPESSORATO	- FLANGE	FLASQUE	FLANSCH
200.01.093	DD256	2		DADO AUTOBLOCCANTE M12	- SELF-LOCKING NUT	ECROU DE SURETE	MUTTER
200.01.094	DD256	2		DADO AUTOBLOCCANTE M12	- SELF-LOCKING NUT	ECROU DE SURETE	MUTTER
200.01.095	RO206	2		RONDELLA NORMALE DIAM. 12 UNI 6592/69	- WASHER	RONDELLE	SCHEIBE
200.01.096	VE305	2		VITE ESAGONALE M12x55 UNI 5737/77	- SCREW	VIS	SCHRAUBE
200.01.097	RO206	2		RONDELLA NORMALE DIAM. 12 UNI 6592/69	- WASHER	RONDELLE	SCHEIBE
200.01.098	VE305	2		VITE ESAGONALE M12x55 UNI 5737/77	- SCREW	VIS	SCHRAUBE
200.01.099	BU008	0		BUMPER PROTEZIONE HS1100/2000	- BUMPER	BUMPER	SPRITZSCHUTZ
200.01.100	RO205	4		RONDELLA NORMALE DIAM. 10 UNI 6592/69	- WASHER	RONDELLE	SCHEIBE
200.01.101	VP003	1		POMELLO M10	- KNOB	POMMEAU	KUGELGRIFF
200.01.102	DD206	1		DADO M10 UNI 5588/65	- NUT	ECROU	MUTTER
200.01.103	VE242	2		VITE ESAGONALE M6x12 UNI 5737/77	- SCREW	VIS	SCHRAUBE
200.01.104	SU222	1		SUPPORTO RUOTA PIVOTTANTE HS	- SUPPORT	SUPPORT	HALTER
200.01.105	RT029	1		RUOTA PIVOTTANTE	- WHEEL	ROUE	RAD



N.Position	Code Num	Qta	Descrizione	Description	Description	Bezeichnung
200.02.001	LP010	1	LAMPADA SPIA ROSSA 220V	- RED PILOT LIGHT 220V	LAMPE VOYANT ROUGE	KONTROLLAMPE, ROT
200.02.002	PY280	1	PRESA 42R04.2311 10A	- SOCKET	PRISE	DOSE
200.02.003	PY307	1	SPINETTA MASCHIO 250V 10A	- PLUG	CONNECTEUR	STECKER
200.02.004	IN024	1	MICRO COMANDO ROTAZIONE SPAZZOLA	- BRUSH ROT.MICRO CONTR	MICRO INTERRUPTEUR	MIKROSCHALTER
200.02.006	IN025	1	MICRO SICUREZZA AH71865	- MICRO SAFETY	MICRO SURETE	MIKROSCHALTER
200.02.007	MP138	4	CARBONCINO MOTORE MONOSP. HS	- BRUSH MOTOR	CHARBONS MOTEUR	MOTORBURSTE
200.02.008	M0130	1	MOTORE MONOSP.HS 1.5 HP 3200 RPM	- MOTOR 1.5 HP	MOTEUR 1.5 HP	MOTOR





POSIZIONE POSITION	QUANTITA' QUANTITY	DESCRIZIONE	DESCRIPTION	
01	1	COPERCHIO CORPO ASPIRAZ.	COVER	
02	1	MOLLA APERTURA COPERCHIO	SPRING	
03	1	DEPRESSIOSTATO	DEPRESSOR	
04	1	COPERCHIETTO	COVER	
05	1	GUARNIZIONE	GASKET	
06	1	SACCO FILTRO	FILTER	
07	4	VITE	SCREW	
08	4	BOCCOLA TIRANTE	BUSH	
09	1	CERNIERA	CLASP	
10	1	CORPO ASPIRAZIONE	SUCTION BODY	
11	1	FILTRO	FILTER	
12	1	FASCIA	ADAPTER	
13	1	GUARNIZIONE	VAC MOTOR GASKET	
14	1	MOTORE ASPIRAZIONE	VAC MOTOR	
15	1	GUARNIZIONE INF.MOT.ASP.	DOWN GASKET	
16	1	CONVOGLIATORE ARIA	ADAPTER	
17	1	FASCETTA	CLAMP	
19	1	TUBO CARTER ASPIRAZIONE	HOSE	
20	1	CARTER ASPIRAZIONE	COVER	
21	1	MANICOTTO	SLEEVE COUPLING	
22	1	ASTA MANICO IN AL.	HANDLE	
23	1	TUBO ASPIRAZIONE	HOSE	
24	4	TIRANTE FILETTATO	THREADED ROD	
25	1	COPERCHIO IMPIANTO ELETT.	COVER	
26	1	VITE	SCREW	
27	1	PASSACAVO	STRAIN RELIEF	
28	1	FERMACAVO	CABLE RETAINER	
29	1	MAMMUT	CLAMP	
30	2	VITE	SCREW	
31	1	VITE	SCREW	
32	2	VITE	SCREW	
33	1	MICRO SWITCH	MICRO SWITCH	
34	1	INTERRUTTORE DI ACCENS.	SWITCH	
35	1	SPIA DEPRESSIONE	LAMPE	

Mat. n.  
Serial no.  
Nr. de serie

Data di spedizione  
Date of shipment  
Date de spedition

**ING. O. FIORENTINI s.r.l.**

Distribuito da:

**“ The Best in floor machines ”**

FILIALI:

20132 MILANO - Fax. 02/2592779

Via Palmanova 211/a - Tel02/27207783 - 2564810

00155 ROMA - Fax. 06/22754075

Via Carlo Carrà 13 - Tel. 06/22754040 - 2275060

STABILIMENTO:

50030 PIANCALDOLI ( FI ) - Fax. 055/817144

Loc. Rombola - Tel. 055/817092 - 817093